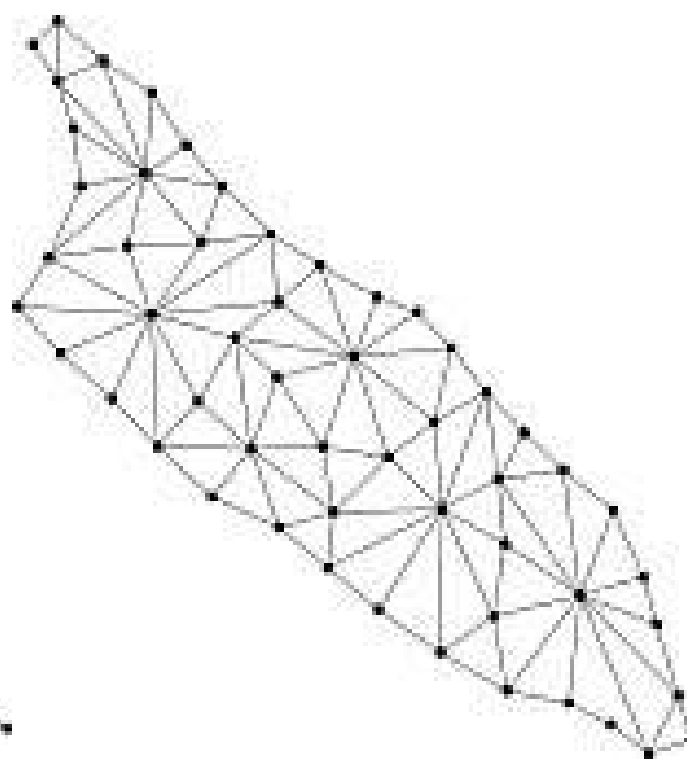
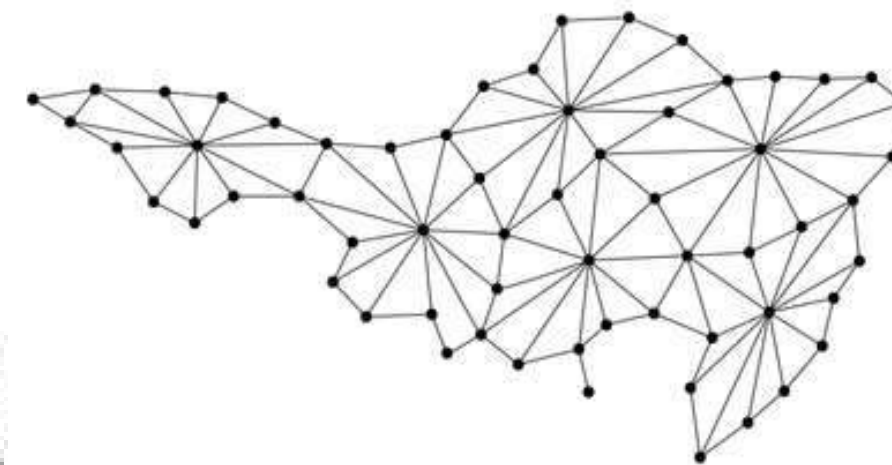




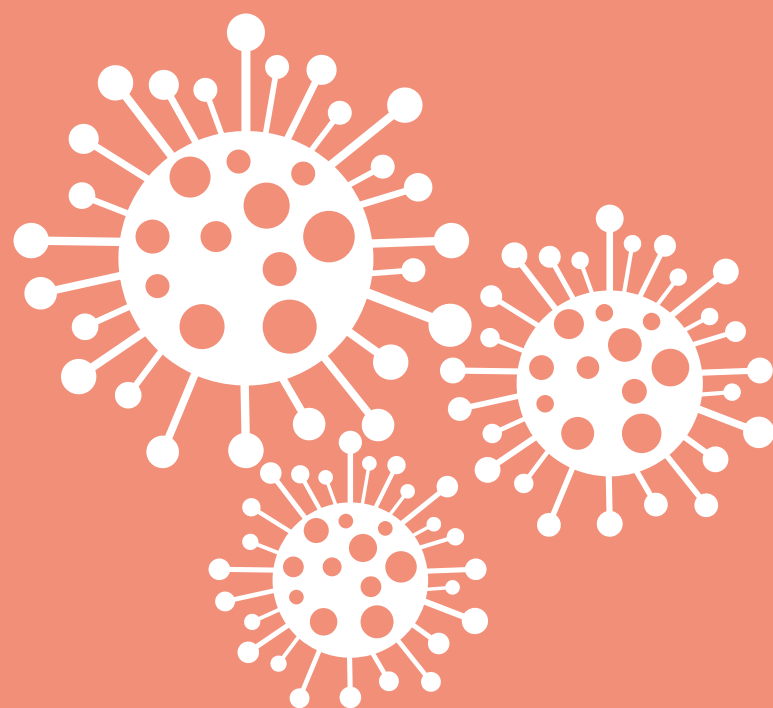
Curaçao



Aruba



Sint Maarten



COVIDCAS

Research into the resilience of
Dutch Caribbean societies

COVIDCAS KICK-OFF WEBINAR

19 JUNE 2021

09:00 - 09:10	OPENING	Moderator: Tineke Alberts PhD (CBHRI)
09:10 - 09:20	INTRODUCTION COVIDCAS PROJECT	Prof. Ashley Duits PhD (CBHRI)
09:20 - 09:50	RESEARCH APPROACH	Prof. Ajay Bailey PhD (UU) Benedicta Deogratias PhD (UA)
09:50 - 10:00	COFFEE BREAK	
10:00 - 10:10	OPERATIONALISATION & PLANNING	Merel Griffith-Lendering PhD (CBHRI) Elly Hellings Msc (CBHRI)
10:10 - 10:35	CAPACITY BUILDING	Izzy Gerstenbluth MD (CBHRI) Elisabeth Echteld PhD (UoC) Benedicta Deogratias PhD (UA) Prof. Antonio Carmona Báez PhD (USM) Prof. Ajay Bailey PhD + Ilse van Liempt PhD (UU)
10:35 - 10:50	LINKS + Q&A	Jelte Elsinga PhD (CBHRI) Tineke Alberts PhD (CBHRI)
10:50 - 11:00	CLOSURE	

PROGRAM

INTRODUCTION

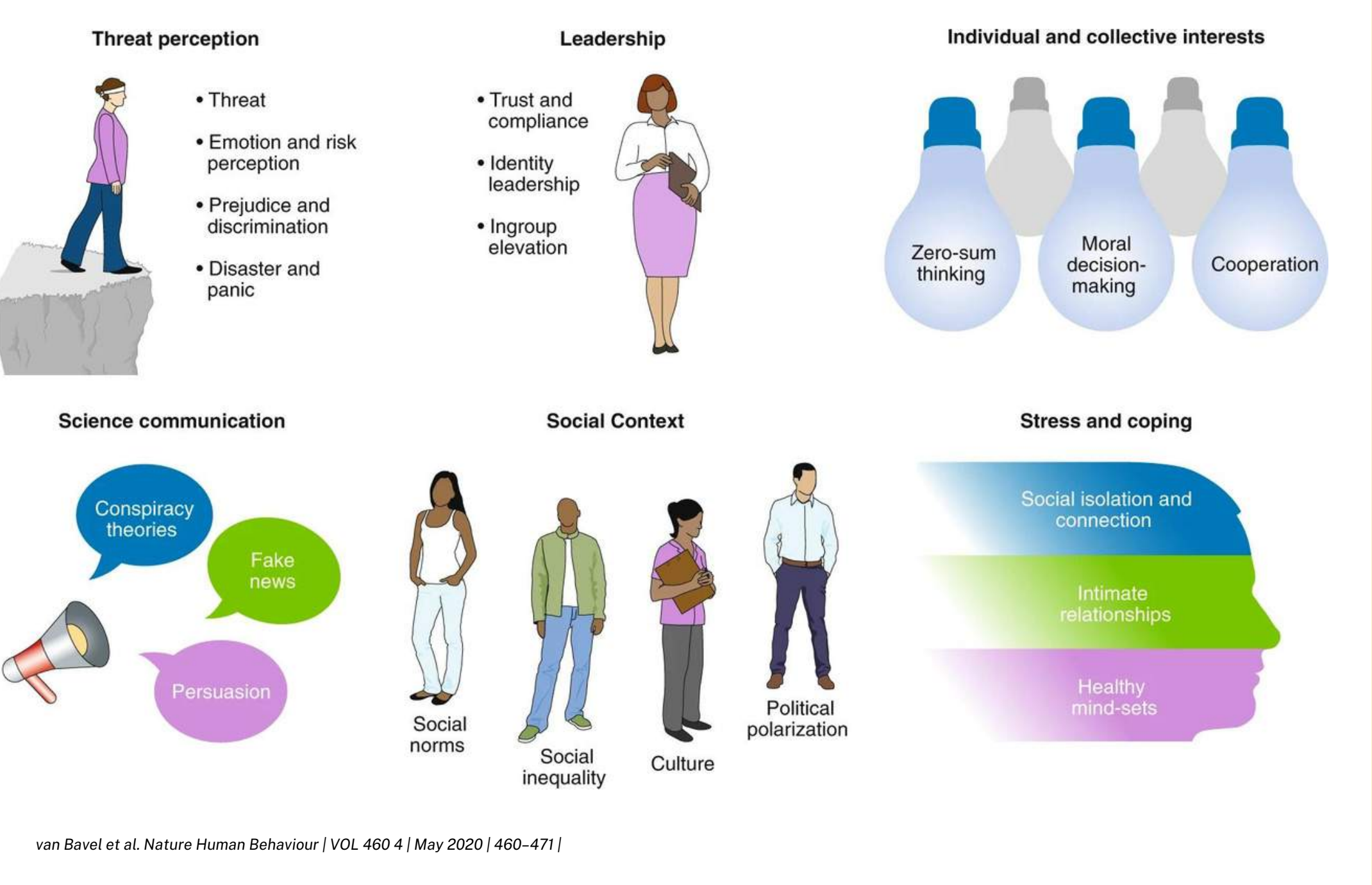
COVIDCAS PROJECT



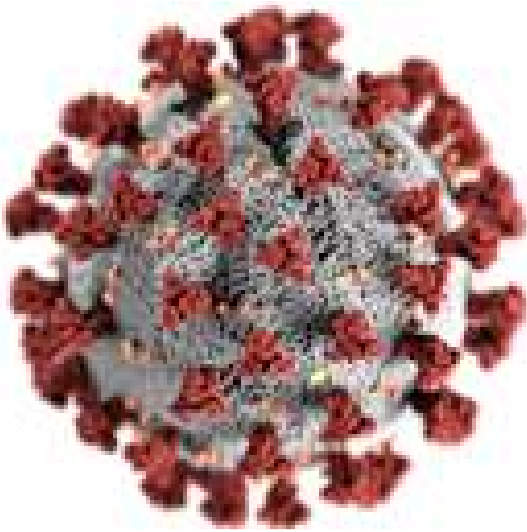
Prof. Ashley Duits PhD (CBHRI)

Nature Human Behavior

Perspective



Disruptive Event



Bottom-up citizen engagement for health emergency and disaster risk management directions since COVID-19

www.thelancet.com Published online June 4, 2021

Priorities for COVID-19 research response and preparedness in low resource settings

www.thelancet.com Published online May 6, 2021

Threat perception

Leadership

Individual and collective interests

HEALTH-CARE SYSTEM RESEARCH

- Learning from communities about access to health services
- Health service data improvements to enable evaluation of excess mortality
- Evaluating and attenuating the indirect impacts of COVID-19 (eg, on routine vaccine and family planning programmes and surgeries and treatment of non-communicable and infectious diseases)

Persuasion

Social norms

Social inequality

Culture

Political polarization

Healthy mind-sets

van Bavel et al. Nature Human Behaviour | VOL 460 4 | May 2020 | 460–471 |

Bottom-up citizen engagement for health emergency and disaster risk management directions since COVID-19

www.thelancet.com Published online June 4, 2021

Priorities for COVID-19 research response and preparedness in low resource settings

www.thelancet.com Published online May 6, 2021

RISK COMMUNICATION

- Identify ways to build trust, awareness, and knowledge before, during, and after responses, and address underlying drivers of fear, anxiety, and stigma.
- Recognise that resource and information channels vary with demographics, acceptability, and access, and tailor communication to participant groups.

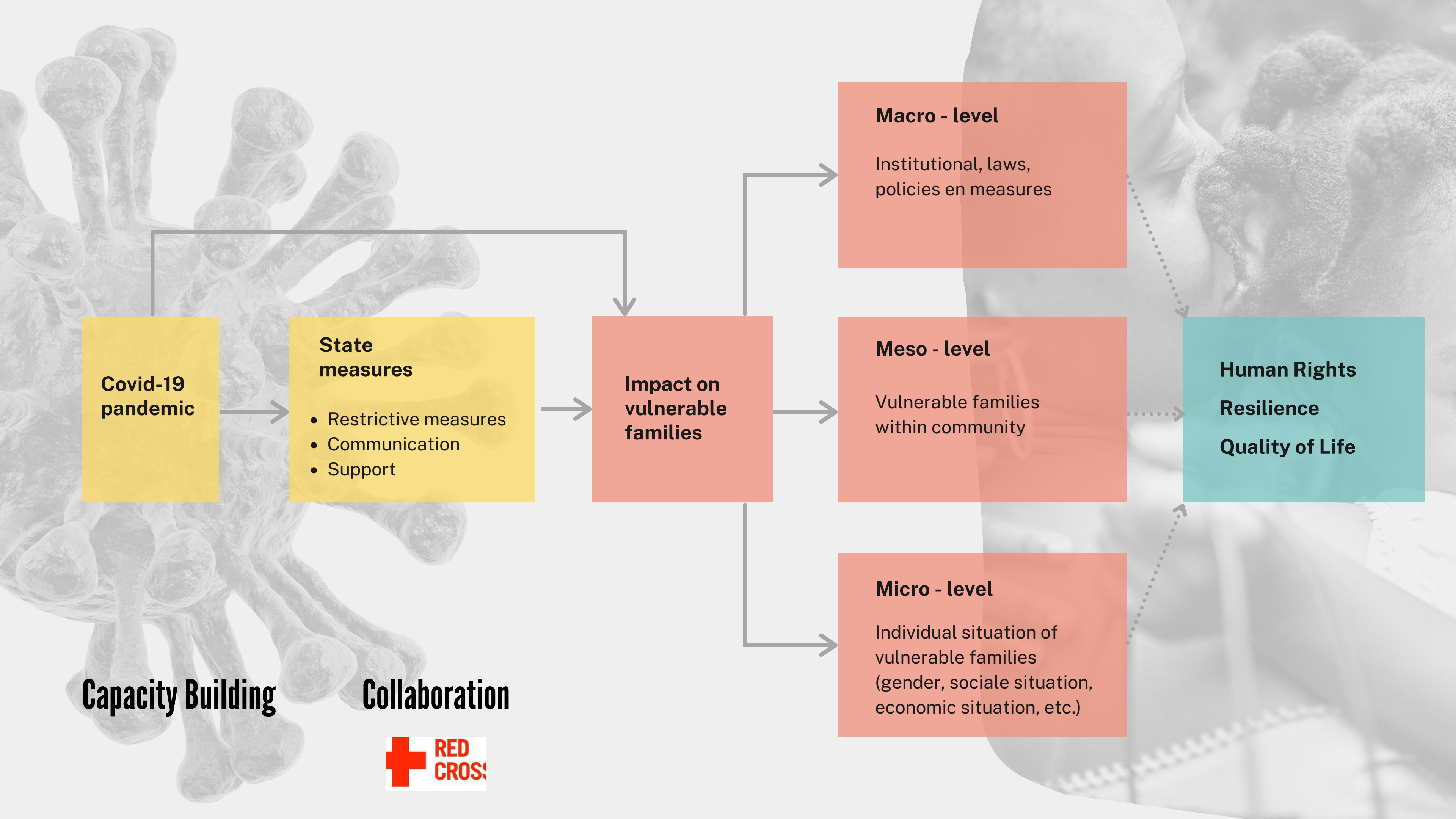
van Bavel et al. *Nature Human Behaviour* | VOL 460 4 | May 2020 | 460–471 |

Bottom-up citizen engagement for health emergency and disaster risk management directions since COVID-19

www.thelancet.com Published online June 4, 2021

Priorities for COVID-19 research response and preparedness in low resource settings

www.thelancet.com Published online May 6, 2021



**Covid-19
pandemic**

**State
measures**

- Restrictive measures
- Communication
- Support

**Impact on
vulnerable
families**

Macro - level

Institutional, laws,
policies en measures

Meso - level

Vulnerable families
within community

Micro - level

Individual situation of
vulnerable families
(gender, sociale situation,
economic situation, etc.)

**Human Rights
Resilience
Quality of Life**

Capacity Building

Collaboration



RESEARCH APPROACH



Prof. Ajay Bailey PhD (UU)



Benedicta Deogratias PhD (UA)

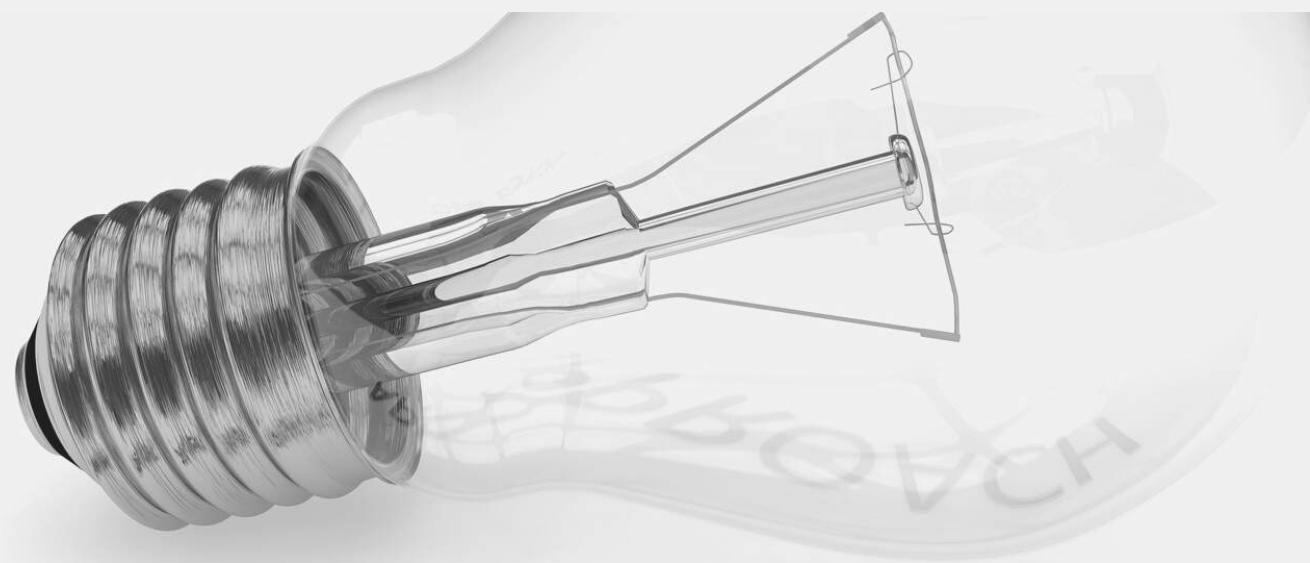
HUMAN RIGHTS BASED APPROACH (HRBA)

- Integration of human rights principles & standards
- Promotion and protect human rights
- Transparency, accountability, equality and non-discrimination
- Inclusion of right-holders & duty bearers
- Focus on marginalized groups
- Capacity development



HRBA CONCEPTUAL FRAMEWORK

OUR APPROACH



PROCES

- Respect and mindful of human rights standards and principles
- Focus on vulnerable families
- Inclusion of stakeholders

OUTCOME

- Identification of inequalities
- Implementation framework that promotes and protect human rights
- Capacity building activities

STUDY

- Are Impact of COVID-19 related measures to the enjoyment of human rights by vulnerable families
 - *Human rights indicators to access COVID-19 measures*
 - *Perception to assess the lived experiences*
- Special focus on gender equality, education and health care

RISK COMMUNICATION

Social Amplification of Risk Framework indicates that hazardous events (such as the COVID-19 pandemic) interact at multiple levels including institutions, social groups and individuals.

Risk communications influences risk behaviour

Infodemics → Miscommunications can lead to vulnerable groups attenuating risk, trust and credibility.

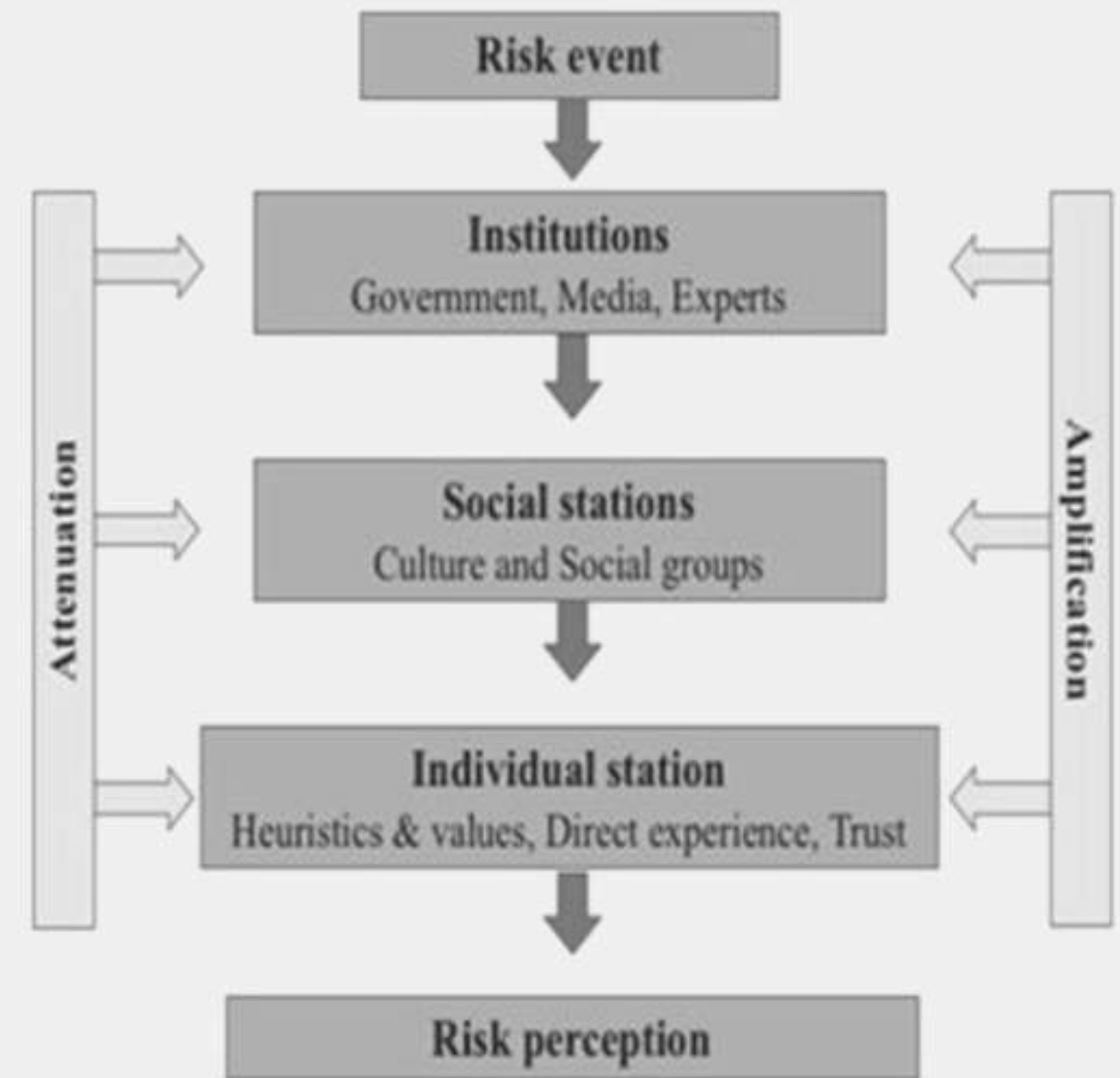


Figure 1: Social Amplification of Risk Framework

OUR APPROACH

Focus on how people receive, process and act of risk communication

Barriers in accessing information

Working with a range of stakeholder to create an implementation framework

- An audit-style checklist to recognise the barriers and bottlenecks in risk communication at various levels
- Guidelines on timing, design and framing of COVID-19 related responses and messages to various audiences, that advance the human rights of vulnerable families.
- Communication strategies for future outbreaks and other epidemics.



OPERATIONALISATION & PLANNING



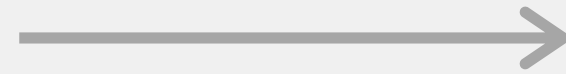
Merel Griffith-Lendering PhD (CBHRI)



Elly Hellings Msc (CBHRI)

PLANNING & METHODS

MACRO LEVEL



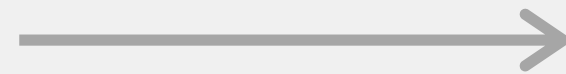
- desk research / (policy) document analysis
- 3 focus groups with policy makers (1 per island)

MESO LEVEL



- desk research / (policy) document analysis
- 10 interviews with relevant stakeholders (eg Red Cross volunteers, on all 3 islands)

MICRO LEVEL



- deskresearch / (policy) document analysis
- 90 interviews (30 per island)

VULNERABLE FAMILIES



GENERAL DEFINITION

Low income households are households with an income < 3500ANG, a size > 3 persons without access to welfare (Red Cross)

WOMEN AND OLDER ADULTS

Tend to be more affected by Covid-19 pandemic and State measures

MIGRANTS / UNDOCUMENTED

Are extra vulnerable as they lack certain rights and provisions

PLANNING

- Time frame 24 months
- Month 0 - 6 Study Design & Desk Research
- Month 7 - 12: Data collection / qualitative interviews
- Month 13 - 18: First round focus groups, analysis qualitative data
- Month 19 - 24 Final round analysis stakeholder meetings / focusgroups and dissemination workshops



ALREADY STARTED

- Preparing interview guides
- Preparation selection of respondents
- Relationship building partners (Red Cross)
- Involvement & support students
- Planning on site visits



CAPACITY BUILDING



Liesbeth Echteld
PhD (UoC)



Prof. Antonio
Carmona Báez
PhD (USM)



Ilse van Liempt
PhD (UU)



Izzy Gerstenbluth
MD (CBHRI)



Benedicta Deogratias
PhD (UA)

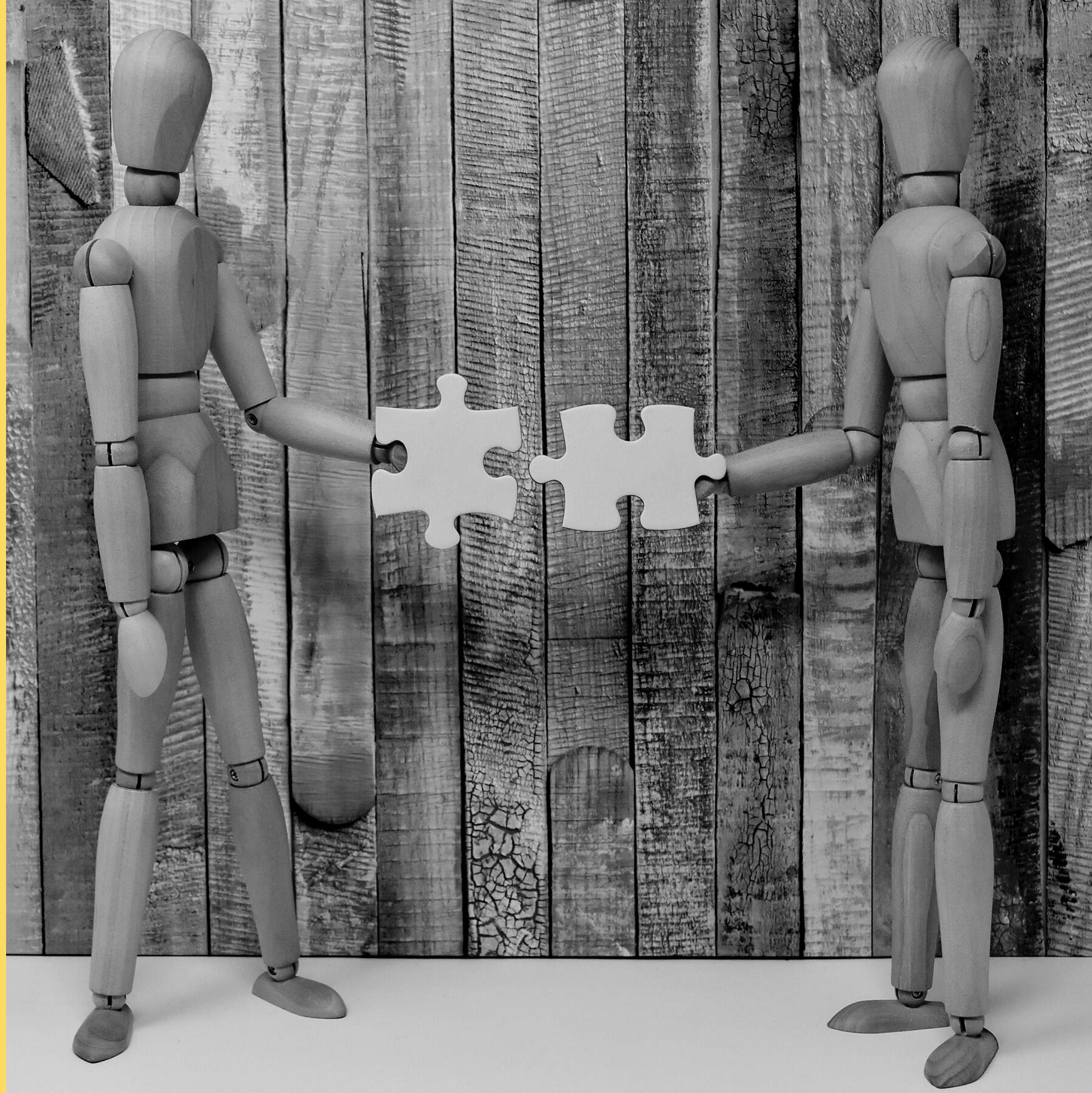


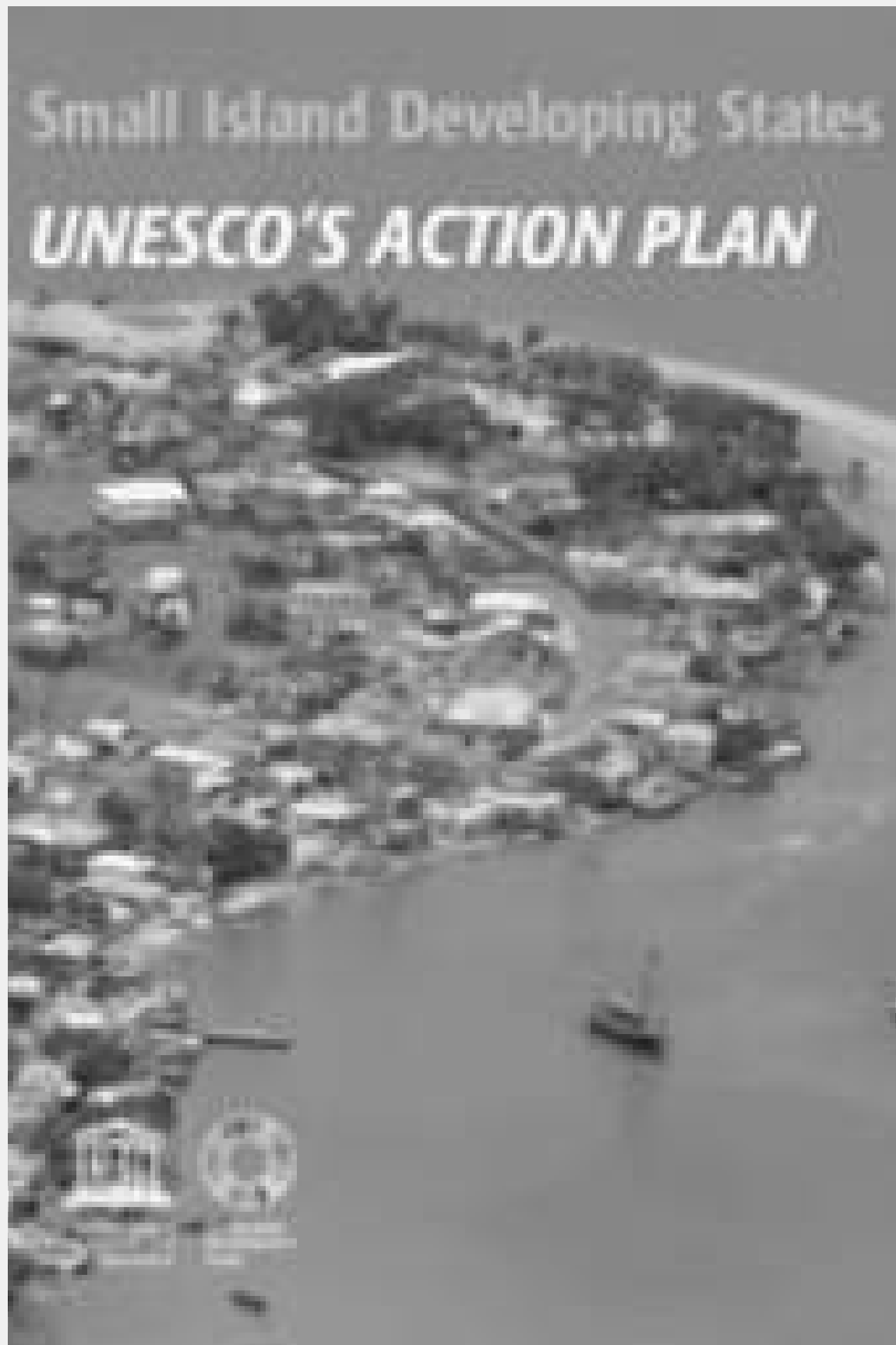
Prof. Ajay Bailey
PhD (UU)



CURACAO BIOMEDICAL & HEALTH RESEARCH INSTITUTE

- Health Research for Development
- "Countries First"
- Essential National Health Research
- Capacity Development
- Capacity Retainment





UNIVERSITY OF CURAÇAO RESEARCH INSTITUTE (UCRI)



The 5 Faculties cover the universal SIDS-themes

- Economy (economic sector)
- Culture (cultural sector, education sector)
- Environment (social work, technology and law)
- Environmental issues

1. School of Law
2. Faculty of Engineering
3. Faculty of Social Sciences and Economics
4. Faculty of Arts
5. Faculty of Social and Behavioral Sciences

5 research programs with research lines

THE LINK WITH THE COVIDCAS PROJECT



UNIVERSITY
OF CURAÇAO
DR. MOISES DA COSTA GOMEZ

1. Training students of faculties on interview techniques
2. Linking Research (Proposals) students UoC to the project and vice versa (twinning)
3. Exchange of knowledge (Webinars)
4. Strengthening inter institutional collaboration
5. Growth of scientific research data
6. Strengthening data management
7. Publications (articles)

CAPACITY BUILDING PROGRAMME - ARUBA



University of Aruba

Law Faculty: Human rights research Clinic

- Master students conduct desktop and field research
- Twinning with UU student

Faculty of Arts and Social Sciences: Research assistant programme

- Bachelor student conduct desktop research

LAW & FAS

- Human rights Research Clinic 2021-2022 (in development)

CAPACITY BUILDING PROGRAMME - SINT MAARTEN



- **Prior to participating in COVIDCAS, and other recently funded research projects (Food Security and Economic Diversity, Islanders at the Helm), research endeavours at USM were sporadic.**
- **Our purpose is to structure research agendas and make it a part of our identity as an institution of higher education serving country Sint Maarten. We hope to train our students in the art of data collection and data analysis with regard to socially relevant topics directly affecting our communities, and prepare them for graduate studies and scientific investigation.**

FOCUS GROUPS

COVIDCAS SXM Research Team held it's first round of focus groups during the week of 7 June with government organisations, NGOs and grassroots organisations, to get a basic understanding of how Sint Maarten dealt with both the aftermath of Hurricane Irma in 2017 and COVID-19. Leading the focus groups were Utrecht University graduate student Sophie Mazur, COVIDCAS SXM Research Coordinator Raymond Jesserun and graduating USM student Iyanla Richardson who followed an independent study course on focus group methodology.



CAPACITY BUILDING - UTRECHT UNIVERSITY



Universiteit Utrecht

- Exchange of 5 students for research.
- Training in Qualitative Research Methods
- Joint training in writing for publications and visualizing research.
- Research mentoring and establishing research ethics protocols.

LINKS + Q&A



Jelte Elsinga PhD (CBHRI)



Tineke Alberts PhD (CBHRI)

PREVIOUS COLLABORATION

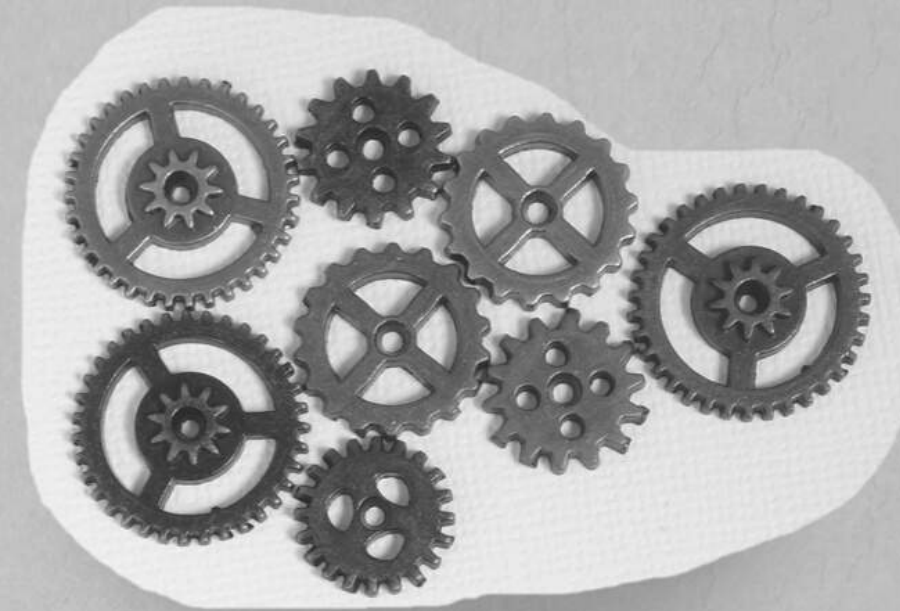
Following the 2014-2015 chikungunya epidemic

- Impact of chronic disease on quality of life
- Attitude towards preventive behaviour
- Risk communication

Ongoing interdisciplinary collaboration

Involvement of communities - bottom-up approach

"Health is a state of complex physical, mental and social well-being and not merely the absence of disease or infirmity" - WHO



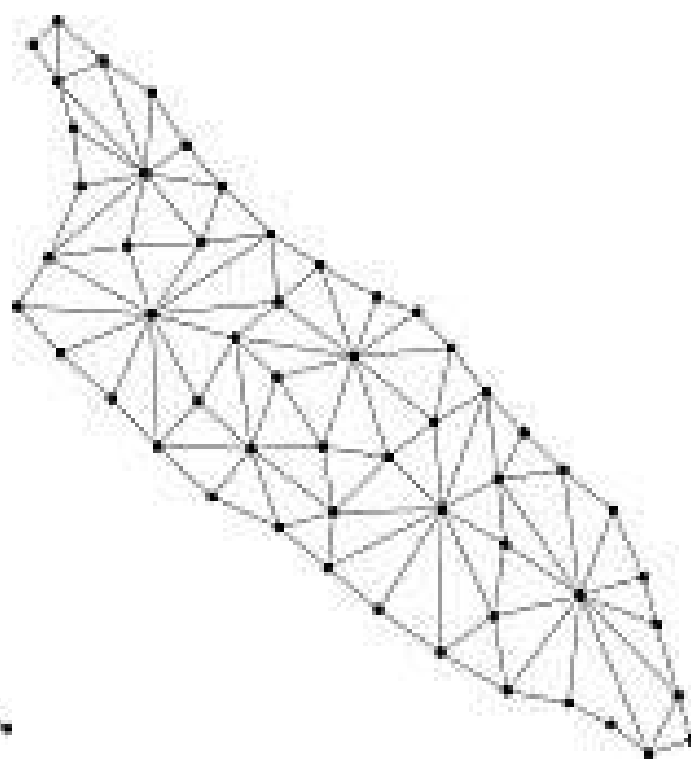
QUESTIONS & ANSWERS



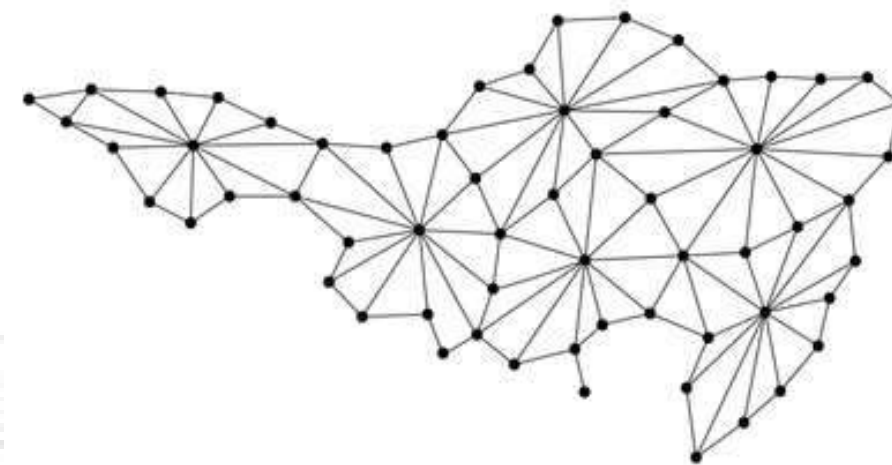
Tineke Alberts PhD (CBHRI)



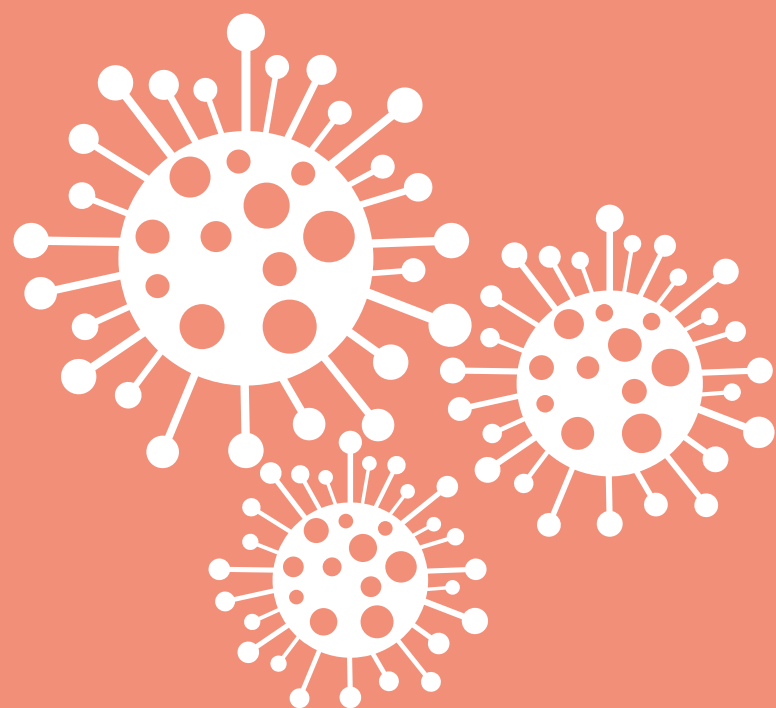
Curaçao



Aruba



Sint Maarten



COVIDCAS

Research into the resilience of
Dutch Caribbean societies